

STAINLESS STEEL HEAVY DUTY FREE-STANDING ENCLOSURES FOR FLANGE-MOUNTED DISCONNECTS

Application

Designed to house electrical equipment and provide degree of protection from dirt, dust, oil and water and to house most standard type disconnects. For installation information, consult our installation manual at www.saginawcontrol.com.

Construction

- 0.104" stainless steel Type 304.
- Seams continuously welded and ground smooth.
- Flange trough collar around all sides of door opening.
- Body stiffeners in large enclosures for extra rigidity.
- Heavy duty lifting eyes anchor into reinforced top.
- Stainless steel concealed hinges.
- Black zinc die cast coinproof/padlocking handle.
- 3-point latching mechanism.
- Black quarter turn latches as required.
- Panel supports.
- Large removable print pockets.
- Pour in place oil and water resistant gasket.
- Removable subpanels mount on collar studs.
- Defeater on master door requires a screwdriver to open.
- Ground stud on door and body.
- Provisions for light kit.

Finish

#4 brushed finish on all exterior surfaces.

Disconnect switch (or circuit breaker) and operating mechanism are not furnished with this enclosure.

IS6 Industry Standards

NEMA Type 3R, 4, 4X, 12 & Type 13
UL Listed Type 3R, 4, 4X & 12
CSA Type 3R, 4, 4X & 12
IEC 60529 IP66

***To maintain Type 3R listing, drainage is required. Install equally rated drainage device or drill a 1/8 to 1/4 inch hole in the bottom center of the enclosure, approximately 1 inch from the right, and 1 inch from the left for drainage, use listed rain-tight or wet location hubs. Drip shield over the door is recommended for all outdoor applications.

STAINLESS STEEL HEAVY DUTY FREE-STANDING ENCLOSURES FOR FLANGE-MOUNTED DISCONNECTS

TWO-DOOR ENCLOSURES

304 STAINLESS STEEL

Enclosure Product Code S2

Catalog No.	Height (A)	Width (B)	Depth (C)	Industry Standard	Catalog No.	Panel Height (D)	Panel Width (E)
SCE-72XM5418SS	72.00	53.75	18.00	IS6	SCE-64P52**	60.00	48.00
SCE-72XM6618SS	72.00	65.75	18.00	IS6	SCE-64P64**	60.00	60.00
SCE-72XM7818SS	72.00	77.75	18.00	IS6	SCE-64P76**	60.00	72.00
SCE-72XM7824SS	72.00	77.75	24.00	IS6	SCE-64P76**	60.00	72.00
SCE-84XM7818SS	84.00	77.75	18.00	IS6	SCE-76P76**	72.00	72.00
SCE-84XM7824SS	84.00	77.75	24.00	IS6	SCE-76P76**	72.00	72.00
SCE-90XM7818SS	90.00	77.75	18.00	IS6	SCE-82P76**	78.00	72.00
SCE-90XM7824SS	90.00	77.75	24.00	IS6	SCE-82P76**	78.00	72.00

316 STAINLESS STEEL

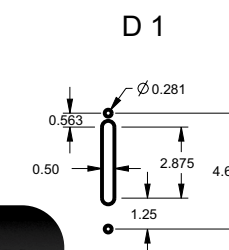
Enclosure Product Code S2

Catalog No.	Height (A)	Width (B)	Depth (C)	Industry Standard	Catalog No.	Panel Height (D)	Panel Width (E)
SCE-72XM5418SS6	72.00	53.75	18.00	IS6	SCE-64P52**	60.00	48.00
SCE-72XM6618SS6	72.00	65.75	18.00	IS6	SCE-64P64**	60.00	60.00
SCE-72XM7818SS6	72.00	77.75	18.00	IS6	SCE-64P76**	60.00	72.00
SCE-72XM7824SS6	72.00	77.75	24.00	IS6	SCE-64P76**	60.00	72.00
SCE-84XM7818SS6	84.00	77.75	18.00	IS6	SCE-76P76**	72.00	72.00
SCE-84XM7824SS6	84.00	77.75	24.00	IS6	SCE-76P76**	72.00	72.00
SCE-90XM7818SS6	90.00	77.75	18.00	IS6	SCE-82P76**	78.00	72.00
SCE-90XM7824SS6	90.00	77.75	24.00	IS6	SCE-82P76**	78.00	72.00

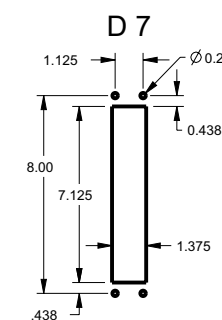
XM ENCLOSURES

* Add the letter U to the end of the part number for enclosures with a universal disconnect cutout.

Standard Disconnect cutout provided



Universal Disconnect cutout



**Subpanel included with enclosure. Replacement subpanels can be ordered.

SINGLE-DOOR ENCLOSURES

304 STAINLESS STEEL

Enclosure Product Code S2

Subpanel (P3)

Catalog No.	Height (A)	Width (B)	Depth (C)	Industry Standard	Catalog No.	Panel Height (D)	Panel Width (E)
SCE-72XM2818SS	72.00	27.50	18.00	IS6	SCE-64P25**	60.00	21.75
SCE-72XM3418SS	72.00	33.50	18.00	IS6	SCE-64P31**	60.00	27.75
SCE-72XM4018SS	72.00	39.50	18.00	IS6	SCE-64P37**	60.00	33.75
SCE-84XM4018SS	84.00	39.50	18.00	IS6	SCE-76P37**	72.00	33.75
SCE-84XM4024SS	84.00	39.50	24.00	IS6	SCE-76P37**	72.00	33.75
SCE-90XM4018SS	90.00	39.50	18.00	IS6	SCE-82P37**	78.00	33.75
SCE-90XM4020SS	90.00	39.50	20.00	IS6	SCE-82P37**	78.00	33.75
SCE-90XM4024SS	90.00	39.50	24.00	IS6	SCE-82P37**	78.00	33.75

316 STAINLESS STEEL

Enclosure Product Code S2

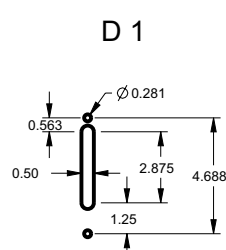
Subpanel (P3)

Catalog No.	Height (A)	Width (B)	Depth (C)	Industry Standard	Catalog No.	Panel Height (D)	Panel Width (E)
SCE-72XM2818SS6	72.00	27.50	18.00	IS6	SCE-64P25**	60.00	21.75
SCE-72XM3418SS6	72.00	33.50	18.00	IS6	SCE-64P31**	60.00	27.75
SCE-72XM4018SS6	72.00	39.50	18.00	IS6	SCE-64P37**	60.00	33.75
SCE-84XM4018SS6	84.00	39.50	18.00	IS6	SCE-76P37**	72.00	33.75
SCE-84XM4024SS6	84.00	39.50	24.00	IS6	SCE-76P37**	72.00	33.75
SCE-90XM4018SS6	90.00	39.50	18.00	IS6	SCE-82P37**	78.00	33.75
SCE-90XM4020SS6	90.00	39.50	20.00	IS6	SCE-82P37**	78.00	33.75
SCE-90XM4024SS6	90.00	39.50	24.00	IS6	SCE-82P37**	78.00	33.75

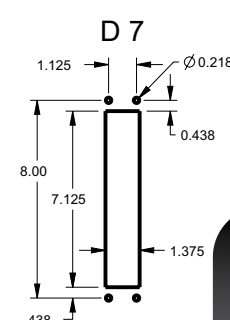
XM ENCLOSURES

* Add the letter U to the end of the part number for enclosures with a universal disconnect cutout.

Standard Disconnect cutout provided



Universal Disconnect cutout



**Subpanel included with enclosure. Replacement subpanels can be ordered.